

# **NAIVETE**

## **HOMOGENEOUS FLOORING INSTALLATION INSTRUCTIONS**

---

## SUBFLOOR

---

**Subfloor inspection is the important responsibility of the installer. It protects yourself against claims and technical problems.**

The installer needs to carry out all necessary subfloor tests prior to flooring installation, and ensure the unqualified subfloor can be repaired, to meet the install requirement.

If the customer refuse to repair the defect of subfloor, the installer should refuse to continue installation.

The time to repair the flooring system must be quite more than repair the subfloor!

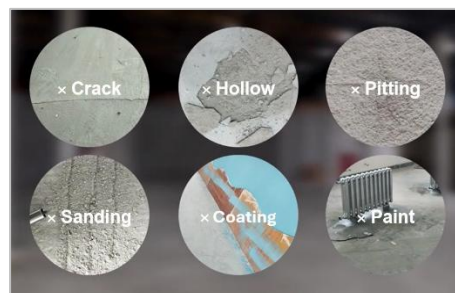


### CONDITION

The subfloor must be clean, hard, flat (height difference between each two meters must be less than 2mm) and free from all types of marks, debris and residues (oil paint, dyestuff, wax, etc...), and not exposed to humidity. Long handled scraper knife, polisher and dust collector are very important tools.

Without the agreement from designer, don't fill any fix materials such as double component polyurethane repair adhesive and stainless-steel bar in any expansion joint.

Please refer to your local building material installation standards for detailed rules and control methods.



### DO

✓ Underfloor heating should stop from min. 48 hours before installation and maintain the temperature in the room with an alternative heating source. Remain turned off for 7 days and then ramped up.

✓ Primer is used before self-leveling cement, to close the

pore and crack on subfloor, reduce the absorptive character, at the same time, it can increase the adhesive ability between subfloor and adhesive.

*Globalflor provides Primer #623 for absorbent type subfloor (such as cement and concrete) and Primer #538 for non-absorbent type subfloor (such as marble and ceramic).*



√ Use self-leveling to ensure the subfloor is flat and strengthen enough before install vinyl flooring. Inspect the flatness again and make sure the height difference is less than 2mm. After coating self-leveling, please use long tine spiked roller to move the inside air bubbles.

*Globalflor provides Self-leveling #668 for C20 class installation, if have higher standard requirement such as C30 class, please contact our sales for suitable products.*



## WARNING

! Choose suitable primer according to absorbent subfloor and non-absorbent subfloor.

! Primer and self-leveling cement should be used according to their official instructions.

! Make sure self-leveling is totally dry, then use 60~80mesh sandpaper disc to polish self-leveling surface. Collect the dust before install flooring.



## BEFORE INSTALLATION

---

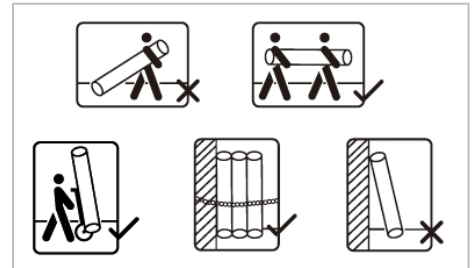
Here are correct methods to carry and store any roll type vinyl flooring, no matter it is in your warehouse or at construction site. Please store all the rolls upright in a safe position to avoid any damage.

Vinyl flooring is easily affected by construction site condition. Before laying, make the flooring materials adapt to construction site condition. Temperature should reach at least 15°C, the relative air humidity should be 30%~60%. Rolls must be stored indoors at least 24 hours before installation, preferably 48 hours.

If construction site condition is allowed, installer needs to clean the subfloor and pave an effective damp proof membrane. Open flooring rolls package until fully spread, stack the pieces in one pile till the edge of flooring is completely flat.

Installation should be carried out at room temperature between 18°C~26°C. Subfloor temperature must be at least 15°C. The relative air humidity should be 35%~65%.

Keep same temperature at least 72 hours after installation.



# INSTALLATION

---

## WARNING

! If the materials from several rolls are used, supplier should make sure they have the same production batch number and be used in consecutive order. If supplier must dispatch the rolls with different production batch, to avoid color difference, installer should use them in different floors, different rooms or different area.

! Sheet must be installed according to roll number which written on label so that color difference is avoided.

! Inspect all materials carefully to verify that the correct colors, batch number, patterns, quality and quantities have been shipped as ordered. Do not install, cut, or fit any material that has visible defects.

! A contractor who installs material that has visible defects or damage without the prior consent of Globalflor deems the product acceptable for installation and therefore accepts full responsibility

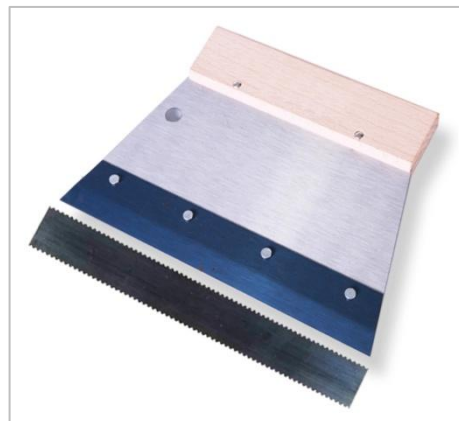
## START

Cut the sheets to length and lay them out to acclimatize and relax prior to installation.

Depending on the design, it might be necessary to cut the roll edges (15mm).



Use recommended spatula (A2) to spread adhesive. it is necessary to change the spatula regularly.



Sticky wires come out when use the finger touches adhesive, means you can start to install the flooring. Different drying time base on different product introduction.

*Globalflor provides Adhesive #050 for the installation.*



## **WARNING**

! Too short a waiting time will cause bubbling to occur. Too long waiting time will result in poor transfer of the adhesive to the flooring.

! Ensure that the correct amount of adhesive is applied to the subfloor that corresponds to the number of sheets being installed, so that the waiting time of adhesive is not exceeded.

! Apply adhesive to an area no larger than can be covered within its working time. Remove any surplus glue spots immediately as work progresses.

! Do not overlap 2 films of adhesive during installation.

## **ROLLING OUT**

Manually, using a cork smoothing press





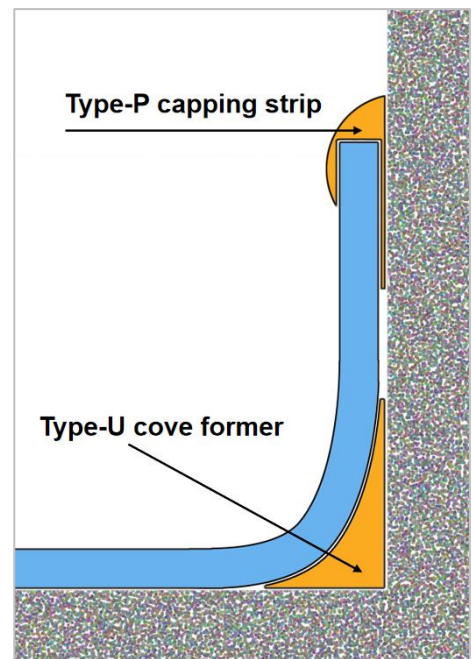
By rolling over the entire surface with a 50kg roller when installation is complete



## EDGE PROCESSING

To avoid bacteria breeding and achieve dust prevention, the sheet flooring can install up to the wall. (Instead of skirting directly)

*Globalflor provides Adhesive #625, Type-P capping strip and Type-U cove former for the installation.*



## WELDING

Do not weld until the adhesive has bonded completely, wait 24h~48h.

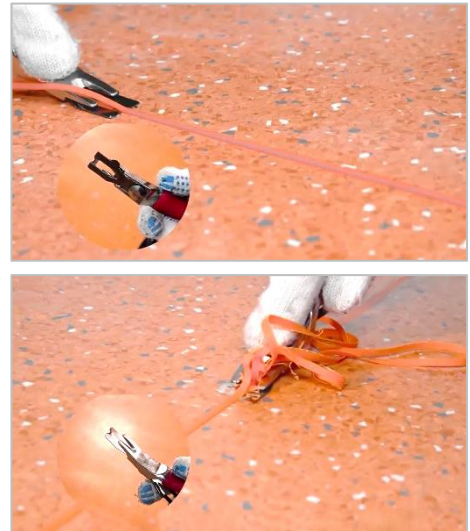
### 1.1 Hot welding

1.1.1 The joints should be grooved to about 2/3 of the total flooring thickness using a U-shape hand grooving tool or automatic machine prior to welding.



1.1.2 Welded seams must cool to room temperature before trimming in two steps, rough and fine trimming.

*Globalflor provides more than 200 solid colors welding rod for different color flooring installation.*



## 1.2 Cold welding

This solution is suitable in the installation if the designer requires seamless joint. Cold welding liquid is required.





## AFTER INSTALLATION

---

Before the project is checked and accepted by the owner, protect the floor surface with protective film or carpet

Normal pedestrian traffic is allowed 48hours after installation. If need move or install furniture, please wait 72hours.

Ensure that the ends of chair and table legs, casters etc. are suitable for flexible PVC flooring. We recommend using flat, patternless tips, with a full surface contact on the flooring surface (avoid the use of conical tips).

Rubber leaves indelible stains on PVC flooring. Do not use mats with rubber backing and rubber end caps. Replace tubular furniture feet with those made of PVC or polyamide.

Wax, not only can close the flooring surface to avoid it from scratch and dust, but also make the maintenance easier.

Please check our Maintenance Guide for more information below.

- Preventive care
- Routine maintenance

